

Title:	How to preview HDMI camera	Version:	v1.0	Date:	3/19/2019
Product:	Cameras			Page:	1 of 5

Preparation

1. DS-2CD21x5G0-IMS.
2. Screw Driver x 1.
3. Displayer with HDMI input.
4. HDMI cable.
5. HDMI switch cable (Type D-to-Type A).

How to preview HDMI camera

1. Loose screws to take part the bubble .



Figure 1

Title:	How to preview HDMI camera	Version:	v1.0	Date:	3/19/2019
Product:	Cameras			Page:	2 of 5



Figure 2



Figure 3

Title:	How to preview HDMI camera	Version:	v1.0	Date:	3/19/2019
Product:	Cameras			Page:	3 of 5

2. Wiring

Insert HDMI switch cable (Type D-to-Type A) and power on device.

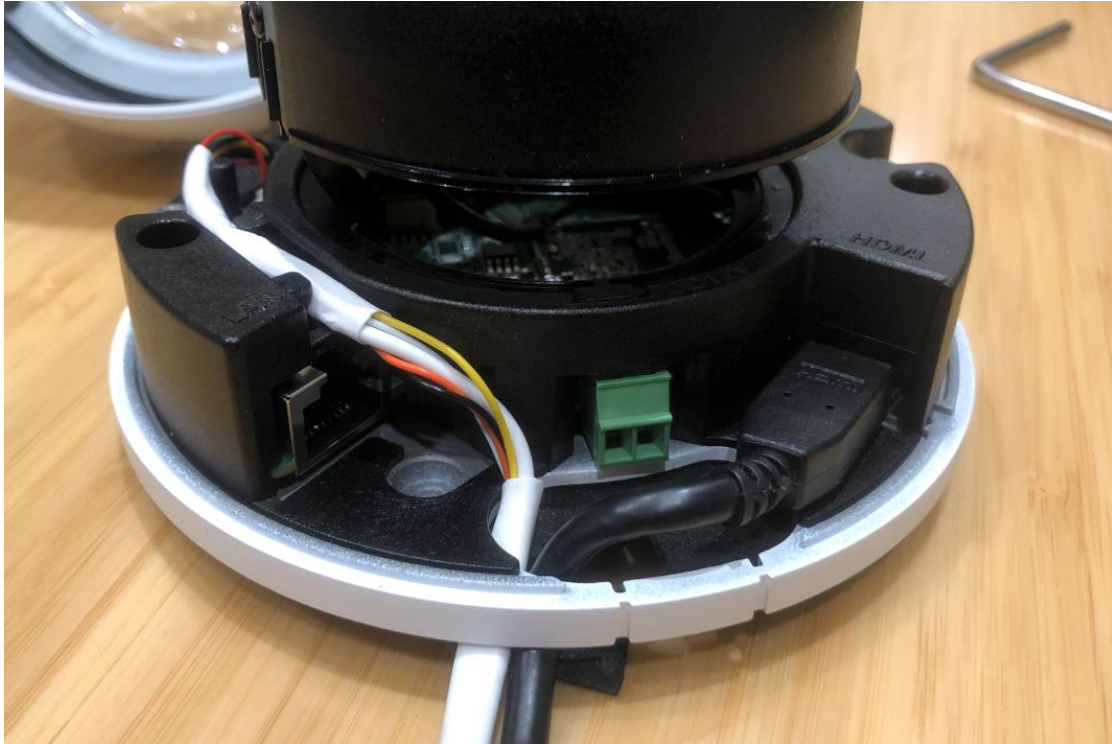


Figure 4

3. Preview

1) We can preview the image via HDMI when device is inactive.

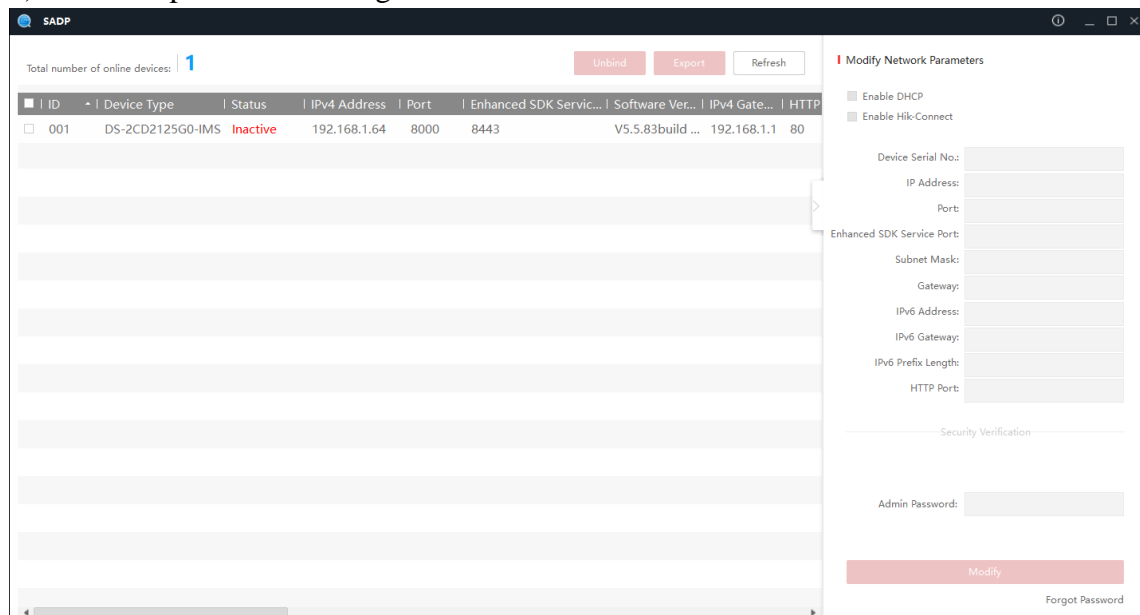


Figure 5

Title:	How to preview HDMI camera	Version:	v1.0	Date:	3/19/2019
Product:	Cameras			Page:	4 of 5

2) Connect camera to the displayer, then it will take a few seconds to show image on the displayer.



Figure 6

Note:

DS-2CD2125G0-IMS and DS-2CD2185G0-IMS only support 2MP HDMI output, it is not depended on resolution itself.

It allows enable/disable HDMI output and change resolution in the Image configuration.

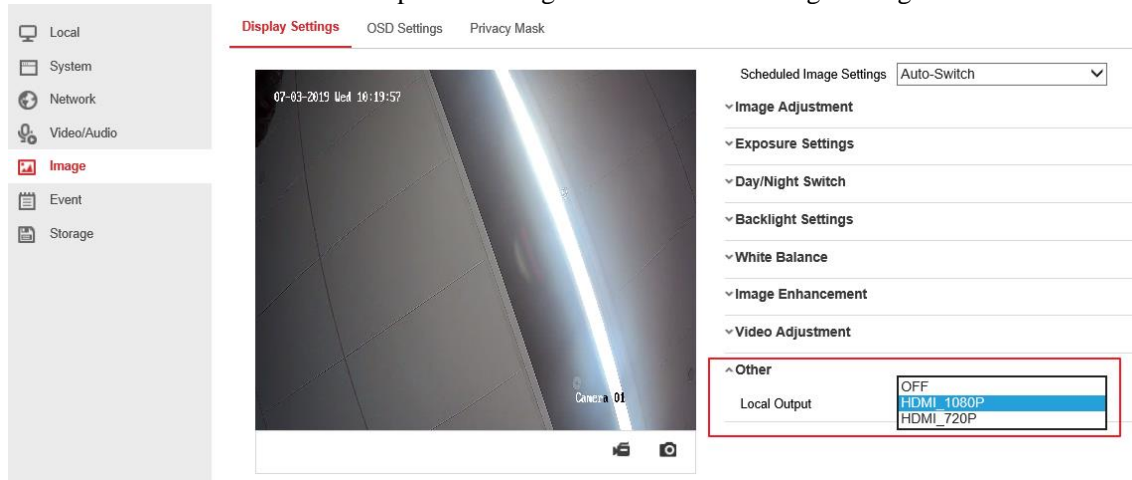


Figure 7



Title:	How to preview HDMI camera	Version:	v1.0	Date:	3/19/2019
Product:	Cameras			Page:	5 of 5

First Choice for Security Professionals
***HIKVISION* Technical Support**